

**Stop on
Red, Kids
Ahead**

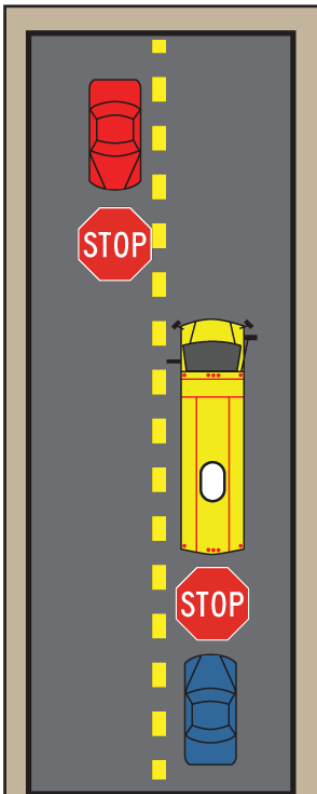


Stop on Red, Kids Ahead

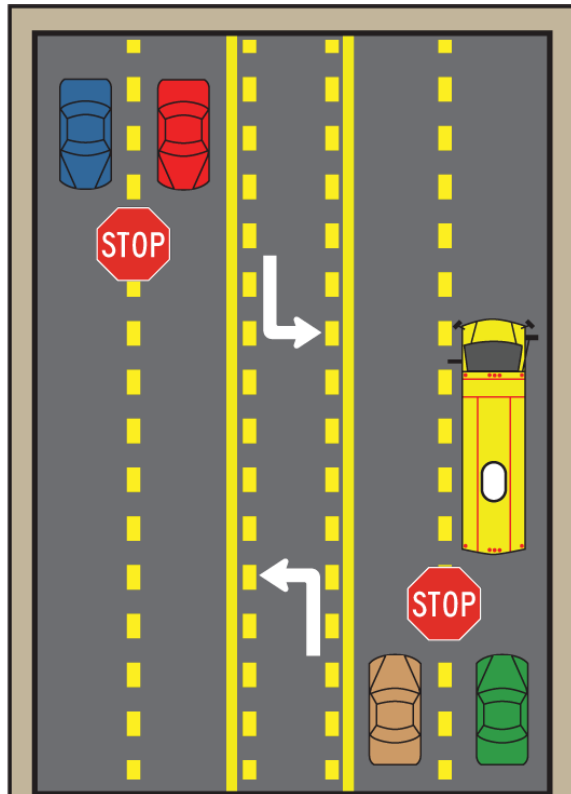
Share the Road with School Buses

Back-to-School Lesson for Motorists

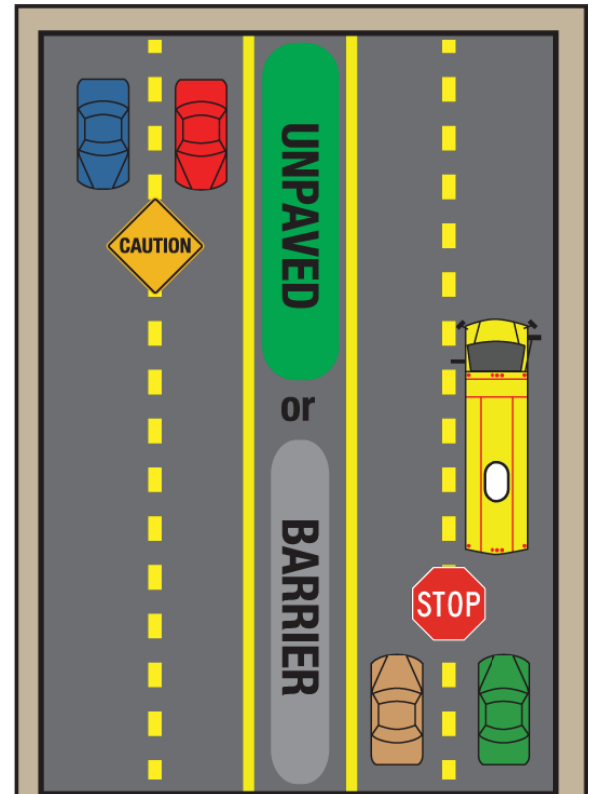
Keep our children safe when they are getting on and off the school bus. Motorists can be charged with Reckless Driving and get 6 demerit points on their DMV record if they pass a stopped school bus that has flashing red lights and an extended stop sign.



**TWO-LANE and
FOUR-LANE:**
Vehicles traveling
in **BOTH** directions
must stop.



**MULTI-LANE with PAVED
CENTER TURN LANE:**
Vehicles traveling in
BOTH directions must stop.



**DIVIDED HIGHWAY with
BARRIER OR GRASS MEDIAN:**
Vehicles behind bus must stop.
Vehicles traveling in opposite
direction, proceed with caution.



**This safety message is sponsored by the
Transportation Department of Suffolk Public Schools**

Now Hiring Bus Drivers and Bus Aides:

Paid training, flexible hours, benefits, holidays and weekends off.

Contact the Transportation Department at (757) 925-5572.

Online Application at www.spsk12.net